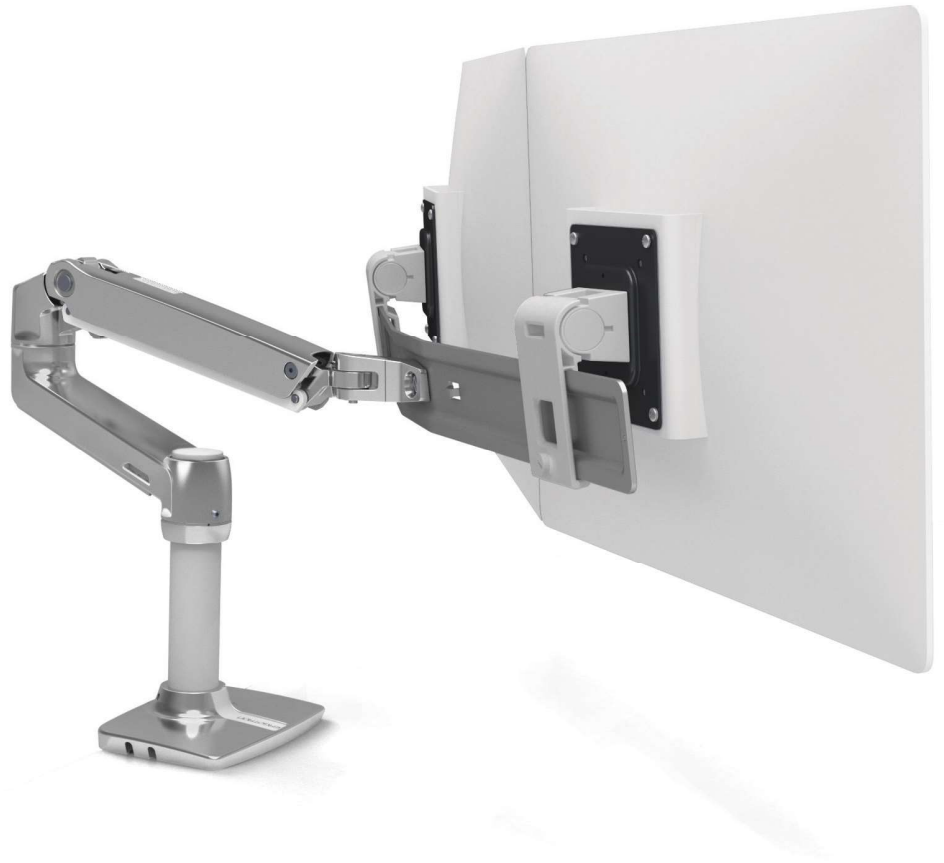


ergotron®

moving you forward

LX Desk Dual Direct Arm

- Easily move two monitors simultaneously to the best ergonomic position
- Allows you to work comfortably and helps reduce eye, back and neck strain
- Frees up your desktop to increase valuable workspace
- Offers an easy to use experience — simple installation to effortless operation
- Provides easy display adjustment with Constant Force™ technology
- Passes Ergotron's 10,000-cycle motion test ensuring years of trouble-free height adjustment
- 10-year warranty
- Multiple desk attachment options are available included with LX arms and as accessory kits



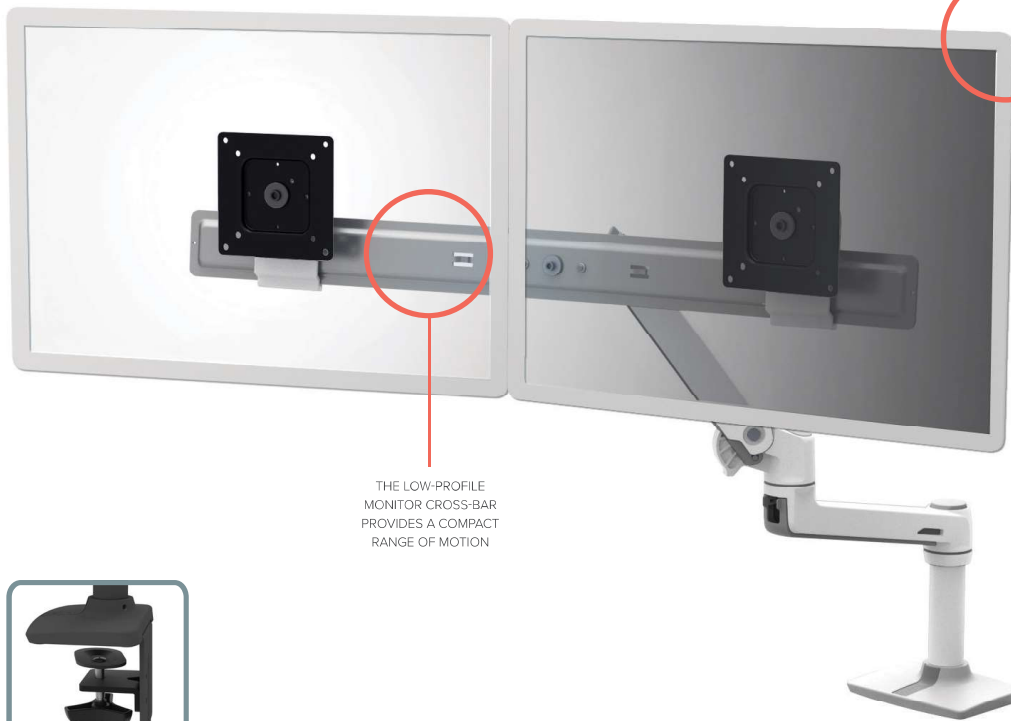
COMPACT DUAL MONITOR ARM INCREASES YOUR WORKSPACE WITH FLEXIBLE, EASY-TO-USE ADJUSTMENT

Create a fully adjustable side-by-side monitor set-up that lifts both LCD screens simultaneously with the LX Desk Dual Direct Arm. The monitor arm makes it easier to see your screens while letting you make the most of valuable workspace.

Repositioning your LCDs is easy. With a simple touch, you can move the screens up, down, forward or back. Customize your view further with individual up and down tilt for each monitor. The low-profile monitor cross-bar provides a compact range of motion that is suitable for most desks.



LX Desk Dual Direct Arm



EACH MONITOR HAS INDIVIDUAL UP/DOWN TILT

THE LOW-PROFILE MONITOR CROSS-BAR PROVIDES A COMPACT RANGE OF MOTION



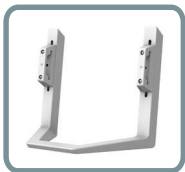
SHOWN WITH WORKFIT-TL SIT-STAND WORKSTATION



INCLUDED:
STANDARD 2-PIECE DESK CLAMP
ATTACHES TO SURFACE EDGE



GROMMET MOUNT KIT
ACCESSORY 98-034:
ATTACHES THROUGH
SURFACE HOLE



RECOMMENDED ACCESSORY:
LX DUAL DIRECT HANDLE KIT
98-037-062 WHITE
98-037-224 MATTE BLACK

LX Desk Dual Direct Arm

LX Dual Direct Handle Kit

Part # (color)	Americas, APAC: 45-489-026 (polished aluminum) 45-489-216 (white) 45-489-224 (matte black)	98-037-062
Includes	LX Arm, extension, standard 2-piece desk clamp, dual bow, (2) monitor pivots, 7" pole and monitor mounting hardware	Handle and handle mounting hardware
Typical LCD Size	≤ 25"	—
<small>LCD SIZE IS APPROXIMATION. DIMENSION IS DIAGONAL MEASUREMENT OF SCREEN. LCD SIZE MAY BE EXCEEDED AS LONG AS SCREEN WEIGHT DOES NOT EXCEED MAXIMUM WEIGHT CAPACITY OF THE MOUNT.</small>		
Weight Capacity	Maximum individual LCD weight 2–11 lbs (1–5 kg) per monitor. Total weight capacity 4–22 lbs (1,8–9,9 kg)	—
Lift	13" (33 cm)	5.7"–10" (14,5–25,4 cm) Adjustable vertical height from center of monitor pivot to top of handle
Tilt	±15° / ±15°	—
Pan	360°	—
Rotation	360°	—
VESA	VESA FDMI MIS-D, 100/75, C (100 x 100 mm & 75 x 75 mm hole pattern)	—
Extension	≤ 24.3" (61,7 cm)	—
Shipping Weight	15.5 lbs (6,6 kg)	13.3 lbs (1,5 kg)
Shipping Dimensions	32.8" x 13" x 7" (83 x 33 x 18 cm)	14.6" x 13" x 8.4" (37 x 33 x 21 cm)
Warranty	10 years	

Download additional resources at ergotron.com

For more information:

USA & Canada: 800.888.8458 / +1.651.681.7600 / customerservice@ergotron.com

EMEA: +31.33.45.45.600 / info.eu@ergotron.com

APAC: apaccustomerservice@ergotron.com

Custom: oemsales@ergotron.com

© Ergotron, Inc. 08.09.2024

Content subject to change.

Ergotron devices are not intended to cure, treat, mitigate or prevent any disease.

Patent information available at www.ergotron.com/patents.

WorkFit, StyleView, LearnFit, Neo-Flex, PowerShuttle, LiFeKinex, CareFit and eKinex are trademarks of Ergotron.

